

# BIRMINGHAM HOME & GARDEN

INSPIRED LIVING FOR BIRMINGHAM & BEYOND

\*Check out our cover story on this  
Smith Lake development. p.24

*find your place  
in the sun*

beach • lakes • gardens

summer  
FUN



# ALABAMA REMODELING EXCELLENCE AWARDS

The 2012 Alabama Remodeling Excellence Awards were presented April 28 at the Marriott Legends at Capitol Hill in Prattville, Alabama. The following pages profile some of our favorite projects in Central Alabama.



We're the good heat.



## COMPLETE LIST OF WINNERS

### BEST IN SHOW

Cowley Residence (Shearer Building Company LLC)

### Whole House under \$250,000

2nd-Valley Grande (Diamond One Construction)

### Whole House over \$500,000

1st-Cowley Residence (Shearer Building Company, LLC)  
3rd-Chambliss Residence (Shearer Building Company, LLC)

### Kitchen Remodel under \$40,000

1st-Calagaz Kitchen (Counter Dimensions, Inc)  
2nd-Hudson Kitchen Remodel (Toulmin Cabinetry)  
3rd-Cherokee Road (Trick Construction LLC)

### Kitchen Remodel \$40,000-\$80,000

2nd-Summey Kitchen (Counter Dimensions, Inc.)

### Kitchen Remodel over \$80,000

1st-The Wynlakes Kitchen (Lisenby Construction)  
2nd-Tincher Kitchen (Counter Dimensions, Inc.)  
3rd-Ireland Kitchen (Counter Dimensions, Inc.)

### Bath Remodel under \$20,000

1st- Reed Bathroom (Kimbrow Renovations, Inc.)  
3rd- Jacobs Bath (Case Design/ Remodeling)

### Bath Remodel \$20,000-\$50,000

1st-Singletary Master Bath (Lovette Construction)  
2nd-Wilson Master Bath (Toulmin Cabinetry)  
3rd-Holt Master Bath (Kimbrow Renovations, Inc.)

### Bath Remodel over \$50,000

1st-Wildwood Master Bath (Kimbrow Renovations, Inc.)

### Additions under \$100,000

1st-Cherokee Road (Trick Construction LLC)  
2nd-McCrory Sunroom Project  
(Precision Homecrafters, LLC)  
3rd-McCrory Second Floor Addition  
(Precision Homecrafters, LLC)

### Additions \$100,000-\$250,000

1st-Woodlands Addition (Case Design/ Remodeling)

### Outdoor Living

1st-Ling Project (Precision Homecrafters, LLC)  
3rd-Holbrook Glass Terrace  
(Roddy O. Sample & Associates, Inc.)

### Basement Remodel

2nd-Riverchase Basement (Case Design/ Remodeling)  
3rd-Bedford Basement (BMR Homes Inc.)

### Universal Design

1st-Bridget's Home  
(Precision Homecrafters, LLC)

### Residential Specialty Projects

1st-Teton Front Entry Makeover  
(H B Thompson Construction Services, Inc.)  
2nd-Home, Hearth, Hearts & Soul  
(Taylor Burton Company, Inc.)

### Space Renovation

1st-Singletary Master Suite (Lovette Construction)  
3rd-Hutchinson Project (Counter Dimensions, LLC)

### Commercial Renovation

2nd-Valley Grande (Diamond One Construction)



JAMES C. GROTTING,  
MD FACS



AL COHN,  
MD FACS

*Board certified plastic surgeons specializing in  
cosmetic and reconstructive surgery of the  
face, breast and body*

One Inverness Center Parkway  
Suite 100  
Birmingham, AL 35242

205.930.1600

[www.grottingcohnplasticsurgery.com](http://www.grottingcohnplasticsurgery.com)

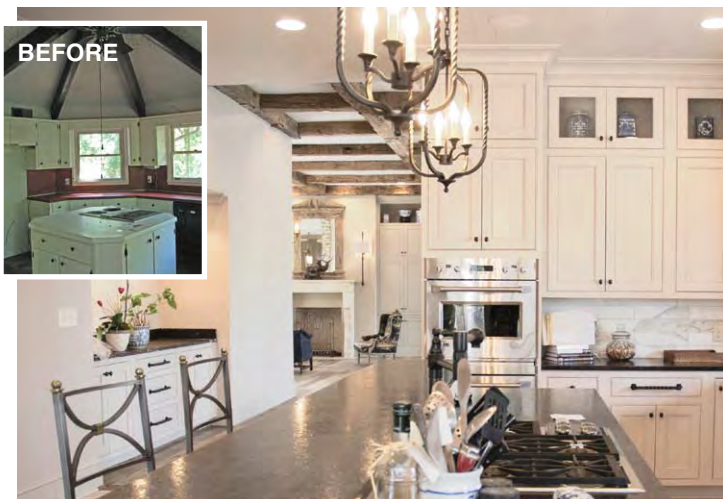


3908 Clairmont Ave. South  
Forest Park  
205.202.5907



[www.shopfullcircle.com](http://www.shopfullcircle.com)

# Shearer Building Company



## Whole House Remodel

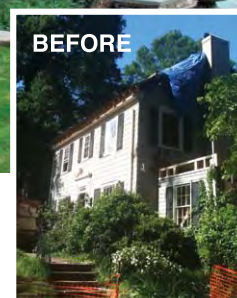
This 70's ranch-style house had been unoccupied for several years. The renovation consisted of completely demolishing the interior, and three additions to the floor plan caused a complete re-configuration of the roof line. These additions took an outdated structure from mid-20th century drab to a refined home with 21st century amenities.

1,200 square feet were added to the house in four areas: Garage, Master Suite, Office and Potting Room. Everything in this house was custom designed by the homeowner and builder. The kitchen has been renovated with a butt-join 1x6 ceiling, silver travertine floors, countertops in a rare granite with marble back splashes, and updated with Wolf appliances and Sub-Zero refrigerator. Custom cabinets were created by Cantley and Company. The main level flooring of the house is all reclaimed barn wood, as well as antique beams on the ceilings with floor-to-ceiling windows overlooking the covered porch. The ceiling of the porch is mushroom board, hemlock reclaimed from Amish mushroom barns. The master bath is all marble with a large walk-in closet.

# Shearer Building Company/ Carey Hollingsworth, Architect

## Whole House Remodel

This 3,000 square foot colonial style home was in need of a major face lift. A complete demolition, upgrades of electrical, plumbing and HVAC, and 2,500 square foot addition of family room, screened porch and garage was the perfect solution for this growing family of six. The kitchen includes custom cabinets, marble countertops with subway tile back splash. The 2,500 square foot addition includes a two-car garage with an ample sized family room. French doors leading to a screened-in porch creates a comfortable, relaxing atmosphere. Reclaimed wood was used for the flooring in the home. Topped off with new landscaping throughout the entire lot gives this home just the right amount of casual elegance.



CAREY HOLLINGSWORTH, ARCHITECT P.O. BOX 530303 BIRMINGHAM, AL 35253 205.907.3711 CH3ARCH@ATT.NET

# Lovette Construction



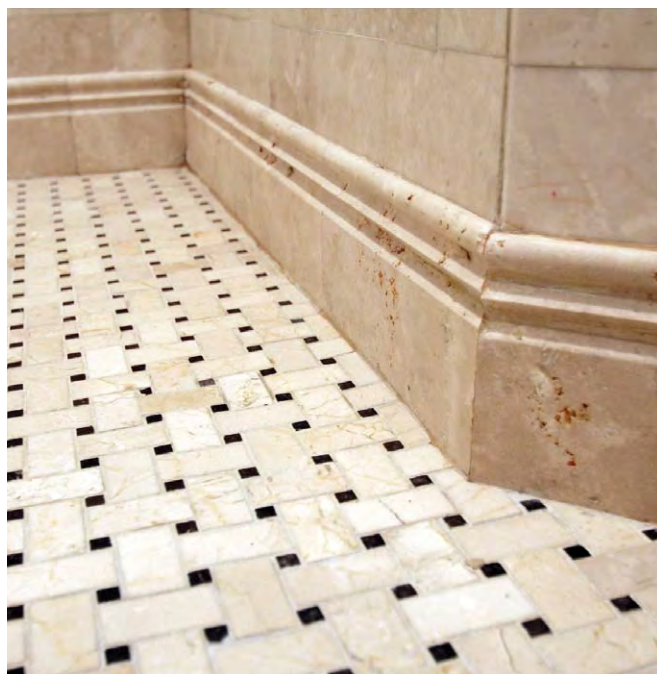
When we are referred a client, we consider it a compliment to a job well done. When the owner of Beth Singletary Interiors, a decorator we have worked with on multiple projects asked us to create a master suite retreat, we considered it the ultimate compliment. These empty nesters had a desire to open up their master bathroom and create a separate dressing room off the bedroom. The owner wanted a seamless flow and look from the bedroom to the dressing room so it would feel like an extension of the room and not a walk in closet. In order to achieve this, a wall was opened up and the study next to the master bedroom was converted into a dressing room with custom cabinetry and antiqued mirrors. The bathroom was gutted, removing all interior walls to create an open footprint allowing for a separate shower and drop in tub with opposing his and her vanities. Travertine and Crema Marfil marble was used throughout, and the weathered oak vanities create a nice contrast to the neutral stone.

**LOVETTE**  
CONSTRUCTION

## Space Renovation and Master Bath Remodel Singletary Master Suite



*“As a decorator, I would highly recommend Lovette Construction for any project big or small. Their craftsmanship and professionalism have always exceeded expectations. Lovette Construction took our suite dreams and made them a sweet reality.” —Beth Singletary Interiors*

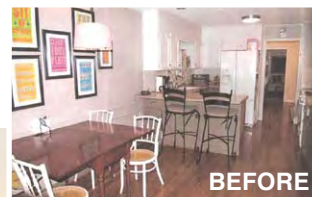


# Counter Dimensions, Inc.

Kitchen Remodel  
Under \$40,000  
Calagaz Kitchen

This newlywed couple bought their first home and wanted to make it their own. The first priority was to open up the kitchen into the adjacent dining and family rooms. The entire kitchen was gutted and the openings between the other two rooms were enlarged and new wood flooring was added. New cabinets, stainless steel appliances and granite countertops created an updated feel in the 1970s ranch-style home.

They were able to check off the items on their wish list, such as added pantry storage while at the same time eliminating the walls that had separated the spaces. The kitchen even seems more open to the outside areas of the back deck and the screened-in porch.



# Counter Dimensions, Inc.

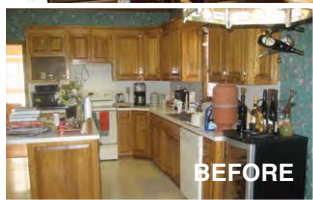
Kitchen Remodel over \$80,000 •  
Tincher Kitchen

This family spent 18 years making major additions and improvements.

In this improvement, the dining wall was partially removed to create a peninsula space into the kitchen, while creating the new focal point of the cooktop and vent hood.

The partial wall removal, new wood-look, porcelain tile floors and new windows set a nice background for the inset cabinets which were stacked to the nine-foot-high ceiling. The copper band on the massive wood hood was commissioned by a local artist and complements the accent tiles in the backsplash.

The base cabinets are a rich, cherry wood, while the wall and tall cabinets are painted a soft mushroom color to match the exterior, topped with quartz countertops and crackle-glazed backsplash tile.



FIVE WINS FOR COUNTER DIMENSIONS, INC.

# Counter Dimensions, Inc.

Kitchen Remodel over \$80,000

• Ireland Kitchen

The kitchen was not only out-dated, but the house was built in the 1980s and had a builder-grade thermafoil cabinet. This is a million-dollar home on Lake Martin and the primary residence for this retired couple. We gutted the kitchen and refinished the hardwood floors with multiple finish coats to protect the floors from living on the lake.

The design of the original kitchen was tight and cramped. With the peninsula sticking out from the cooktop area, you were trapped in a small space all by yourself. The new design took the cabinets to the full 10 feet of the ceilings, allowing for much-needed storage. The bar was incorporated into the kitchen area, making it more user-friendly. The island is 108" long and 46" wide with storage under the seating side. This large island is now the heart of the kitchen.



## LET US TAKE YOUR REMODELING PROJECT TO A NEW DIMENSION



FULL-SERVICE DESIGN AND REMODELING FOR RESIDENTIAL AND COMMERCIAL KITCHENS AND BATHS

kitchen&bath

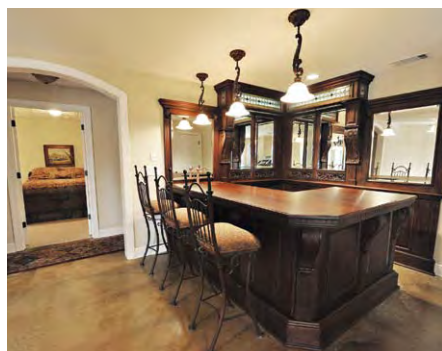
**COUNTER**  
*dimensions*  
counters&cabinetry

2726 Chandalar Place Dr.

Pelham, AL 35124

205-664-3587

[www.counterdimensions.com](http://www.counterdimensions.com)



## Case Design/ Remodeling

Basement Remodel  
Riverchase Project

This project takes the standard, suburban daylight basement build-out to new heights with a range of architectural details that make it a very special place for entertaining. Trayed ceilings and columns divide the large space into well proportioned areas for television, billiards, exercise, and bar. The texture and color of the stained concrete floors tie together the formal trim elements with the rustic fireplace which was crafted from materials originally used in a grandparent's home. The specialty bar is simply a work of art. The project includes a bedroom/study and full bath, achieving the client's goal for maximizing space while adding a lot of wow factor.



Good design makes all the difference when remodeling or undertaking an addition to your home. Make sure your project is timeless, efficient and beautiful by choosing CASE. Our award-winning team of designers and craftspeople are committed to exceeding your expectations. Our initial consultations are free and our advice is priceless, so call today to learn about the CASE Design/Build process.

### UPCOMING EVENTS:

Free Kitchen & Bath Seminars  
Sat., April 21 from 10:00 am to Noon  
Sat., May 5 from 10:00 am to Noon

 **CASE**  
DESIGN/REMODELING

To attend a free seminar or see photos of our remodeling projects go to [Birmingham.CaseRemodeling.com](http://Birmingham.CaseRemodeling.com) or call 205.968.6000

# Taylor Burton Company

Residential  
Specialty Projects

*Replacing your prefab with a real wood burning fireplace is more affordable than many people think and can add so much enjoyment and value to your home.*



This homeowner wanted to upgrade his fireplace by replacing his typical pre-fabricated gas log insert with a "real" wood burning one. This winning project was crafted with timeless Alabama sandstone, reclaimed Alabama oak, cypress, and other custom elements.

The mantel was honed from a recycled tree, while the corbels were adopted from sustainable cypress within the homeowner's hunting club.

The resulting memory-making hearth now warms both heart and home. Let Taylor Burton make your home's fireplace safe, green and natural with the romantic glow of a new wood-burning fireplace.

*We build Homes,  
Dreams,  
and Relationships*



TAYLOR BURTON  
COMPANY, INC.

Home Builders & Remodelers  
205-822-7936  
[www.taylorburton.com](http://www.taylorburton.com)

